



# *Flatbed & Drop Deck Trailers*



## First in Aluminum Trailers

▶ Designed for Optimum Payload



# Get More with East Flatbed & Drop Deck

## *The ideal balance of strength and weight for optimum payload over the long haul.*

In addition to maximizing payload, East trailer models deliver strength and durability to meet the needs of all types of flatbed and drop deck trailer applications. By incorporating lighter weight and longer lasting components into each and every trailer, East has earned the reputation of having higher resale value.

The strength of our flatbed and drop deck trailers is our dual-T main beam and exclusive cross member design, increasing durability and balancing load stresses more evenly for longer life and less maintenance.

Its two T-shape extrusion sections of 6061-T6 aluminum alloy are welded not bolted. The weld is in the neutral axis of the beam where stress is minimal. Our seamless-tubed cross members use 6061-T6 aluminum so they are more twist resistant in a turn than conventional C-shaped and I-beam cross members.

The newly designed flatbed floor has a 24-lb. weight savings on a 48-foot flatbed with a 10% increase in strength under a distributed load and 30% increase under a concentrated load.

## **More Payload**

When margins are slim, you must look for ways to maximize payload and increase your profitability. East has designed one of the lightest and strongest aluminum flatbed and drop deck trailers on the road today.

## **More Strength**

The East design uses high-tensile aluminum in its composition. The fully-enclosed floor design with full-length continuous welds joining the floor decking to the main-frame beams provides maximum strength and wind resistance.

## **More Versatility**

For more profitability, the combination of lightweight, strength and high load ratings gives you versatile and flexible load options.

## **More Corrosion Resistance**

Aluminum is the best guard against corrosive elements and chemicals, lowering your maintenance costs.

## **Higher Resale Value & Longer Life**

East trailers have a reputation for quality that brings a higher resale value. Many East flatbeds remain on the highway over 30 years, still providing reliable service no other manufacturer can match.



**5-Year Limited Warranty**

# Flatbed Trailers

## FLATBEDS FOR EVERY APPLICATION

East has four models to meet the needs of your application.

**BEAST™ (BST)** – Providing more stability and less flex during cornering and maneuvering, the Beast delivers up to 1,500 lbs. more payload than a comparable composite flatbed trailer. The Beast is rated to handle loads up to 52,000 lbs. concentrated in 4 feet, up to 60,000 lbs. concentrated in 10 feet and up to 90,000 lbs. distributed on a 48-foot wide-spread tandem-axle trailer. It is available in lengths up to 53 feet with a 10½-inch neck. in lengths up to 53 feet with a 10½-inch neck.



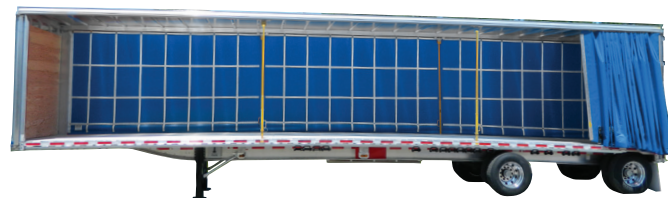
**BEAST™ II (BST II)** – Designed with all the features and benefits of the Beast, the Beast II meets the needs of applications requiring higher concentrated load ratings without additional weight. It handles loads up to 65,000 lbs. concentrated in 4 feet on a 48-foot wide-spread tandem-axle trailer, up to 72,000 lbs. concentrated in 10 feet and up to 100,000 lbs. distributed. Ideal for two to three-axle configurations, it is available in lengths up to 53 feet and boasts a 13½-inch neck with a 2-inch deeper main beam than the BST.



**MMX™** – Offering one of the highest concentrated load ratings in an aluminum flatbed, the MMX is rated to handle loads up to 80,000 lbs. concentrated in 4 feet, up to 89,000 lbs. concentrated in 10 feet and up to 145,000 lbs. distributed with a multi-axle configuration on a 48-foot wide spread trailer. Ideal for multi-axle applications, it is available in lengths up to 53 feet and boasts a 13-inch deep neck with a heavy-duty main beam.



**BEAST™ NARROW NECK** – With over a decade of proven performance, the 8-inch narrow neck on the all-aluminum flatbed offers the same durability, strength and payload of the BST plus the capability to be equipped with an enclosure, providing more load versatility and protection. Adaptable to curtainside and rolling-tarp systems it has up to a 106-inch clear inside height – just 4 inches short of a van. It is rated to handle loads up to 50,000 lbs. concentrated in 4 feet, up to 60,000 lbs. concentrated in 10 feet and up to 80,000 lbs. distributed on a 48-foot wide-spread tandem axle trailer.





## **INDUSTRY-LEADING DROP DECK TRAILERS**

Setting the standard for long life and low maintenance, East drop deck trailers are one of the lightest and strongest on the market, available in overall lengths up to 53 feet. To keep weight down, East drop deck trailers feature the industry's only true all-aluminum, one-piece neck – no bolts or steel reinforcement needed for today's special load requirements.



### **EXTRA-STRONG NECK DESIGN**

Our exclusive one-piece all-aluminum, double-contour neck design drastically reduces stress in the transition area for greater strength and longer life with a lower overall trailer weight.

**BEAST™ (BST DROP)** – Offering a structural load rating of 80,000 lbs. distributed on a 48-foot wide-spread tandem-axle trailer, it can carry up to 2,500 lbs. more payload than a comparable steel drop deck, and up to 1,200 lbs. more than a comparable composite.

**BEAST™ II (BST II DROP)** – Designed with all the features and benefits of the BST, the BST II DROP meets the needs of applications requiring higher load ratings without additional weight. It is rated up to 100,000 lbs. distributed on a 48-foot widespread tandem-axle trailer. And, it boasts a 2-inch deeper main beam than the BST DROP.

**EXTREME-LOW DECK (XLD)** – Designed for increased payload versatility and better stability, the first all-aluminum drop deck trailer with a low-slung 36-inch deck height offers a lower center of gravity. With specialty loads, particularly equipment loads getting taller and taller, the new low-height East drop deck reduces the need for partial dismantling of the load to get it below the 13-foot 6-inch maximum legal height. Available in Beast with a structural load rating of 80,000 lbs. distributed on a 48-foot wide-spread tandem-axle trailer.



## STANDARD FEATURES

### Fully-Enclosed Wiring

Hollow-core siderail design, Securelight™ provides a conduit for wiring to be fully enclosed. Standard with LED PC-rated surface-mounted lights.



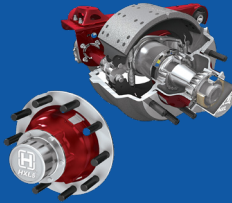
### Cargo Controls

Siderail extrusions are designed for adjustable chain tie-downs and a unique winch strap capture system.



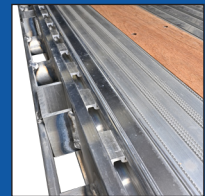
### Hendrickson HXL5® Wheel End System

The READY-TO-ROLL HXL5 is designed to maximize uptime and efficiency and reduce wheel-end maintenance. The preassembled and adjusted HXL5 features a premium seal, high-performance synthetic semi-fluid grease and a PRECISION320™ spindle nut system, which allows for ultra-precise bearing adjustment.



### Outside Tie Down Track

The new integrated extruded aluminum outside rail tie down system for cargo securement is standard on all East flatbed and drop deck trailers, eliminating the need for welds and reducing assembly time. Available as an option on the inside and center tie down tracks.



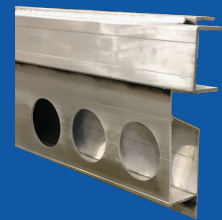
### Alcoa's Ultra ONE® Wheel

Ultra ONE® 22.5 x 8.25 wheel is standard. At just 40 pounds, the wheel is the lightest wheel in its class and strong enough for demanding applications.



### Rear Panel Fully Sealed

Fully-sealed rear panel is water resistant. Recessed grooves protect conspicuity tape and rubber dock blocks, and a heavy-wall bumper provides added protection.



### JOST AX150 Alumilight Landing Gear

Up to 50 pounds lighter per set and no external gearbox, the AX150 Alumilight includes a galvanized inner lower leg, crank handle and cross shaft. With a 160,000-lb static rating and a 55,000-lb lift, the maintenance free landing gear comes standard with a 10-Year Warranty.



### Double-Seal Truck-Lite 99® Series Wiring Harness

To guard against corrosion, the harness has been designed as a closed system by integrating a molded plug with two sealing surfaces rather than just one.



## OPTIONAL FEATURES

- Double-L Siderail system
- Inside & Center Tie Downs Tracks
- Container Twist Locks
- Aluminum Tool and Side-Kit Boxes
- Bulkheads: Fixed and Removable
- Lightweight Forklift Kit

See [EastMfg.com](http://EastMfg.com) for more optional features.

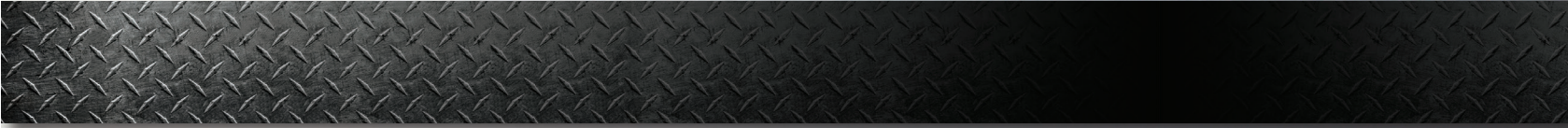
### DROP DECK OPTIONS

- **Easy-Access Tarp Storage Compartment**  
Aluminum built-in tarp storage compartments can be built into the floor of the upper or lower deck. This on-deck access location reduces multiple ups and downs on the trailer (lessening the chance for falls) to tarp the load, or store the tarp and tie-down.

### FLATBED OPTIONS

- **Easy-Access Stairway**  
Integrated stairway provides a simpler, easier and safer entrance to and exit from the flatbed deck. A locking door enclosure allows for additional lights and license plate mounting while providing the rear with a more custom appearance.





**East Manufacturing Corporation**  
1871 State Route 44  
P.O. Box 277  
Randolph, Ohio 44265  
888-405-3278 | [EastMfg.com](http://EastMfg.com)

*Specifications may change without notice.  
Actual components may vary.*

*Copyright ©2024 East Manufacturing Corp. 2M/3-24*

