

Truck and Trailer Accessories



Catalog



Revised October 2023

Truck and Trailer Accessories



Table Of Contents

East is an Aftermarket Authorized Dealer for Aero Equipment Tarp Systems, Minimizer Poly Fenders, and Iconic Metal Gear Accessory Equipment.

Please Contact an East Parts Associate for Assistance in Quoting Your Truck and Trailer Accessory Needs.

| <u>ITEM</u> | <u>PAGE NUMBER</u> |
|--|---------------------------|
| TOOL BOXES | 2-5 |
| CAB STORAGE RACKS | 6 |
| ACCESSORIES | 7 |
| PRO-SERIES ALUMINUM FENDERS | 8 |
| MINIMIZER Poly Fenders and Kits | 9 |
| PRO –SERIES MOUNTING KITS | 10 |
| X-FLEX FENDER MOUNTING TECHNOLOGY | 11 |
| EXTRUDED DECK PLATES | 12 |
| HYDRAULIC RESERVOIR KITS / HOSES | 13 |
| HYDRAULIC KITS | 14 |
| WARRANTY | 15 |

Truck and Trailer Accessories



Tool Boxes

East STEP N STORE BOX



Constructed of 3/16" Aluminum Smooth Door, Diamond Plate sides and bottom. Door is sealed with a solid rubber weather seal & Secured by a Special Locking Draw-Down T-Latch. Perfect for storage on the frame rails where space is wasted and also used as a Step access to the back of the cab. Bolts to the side of the frame, (12", 18" & 24" no need for brackets—30" and 36" boxes, brackets (566-30802-00) recommended.

| | | |
|-------------|--------------|--------------------|
| Part Number | 725-40036-04 | 17"h x 22"d x 12"w |
| Part Number | 725-40036-00 | 17"h x 22"d x 18"w |
| Part Number | 725-40036-01 | 17"h x 22"d x 24"w |
| Part Number | 725-40036-02 | 17"h x 22"d x 30"w |
| Part Number | 725-40036-03 | 17"h x 22"d x 36"w |

Iconic Big Mouth Step Box



| | | |
|-------------|--------------|--------------------|
| Part Number | 725-40003-18 | 20"h x 24"d x 18"w |
| Part Number | 725-40003-24 | 20"h x 24"d x 24"w |

50% Larger opening than traditional step boxes allows you to store more tools, more easily.

Enables the Use of Unused and Hard-To-Use Frame Space.

Adds Useful Additional Storage.

Strong, Lightweight Aluminum Construction.

High-Quality Automotive Bulb Seal for Water Resistance.

Step Tread Increases Safety by Reducing the Possibility of Slipping.

Mounting Kit: Steel L-Brackets: 24x24" P/N: 1900, or 24x30" P/N: 1901

East DOUBLE DOOR (2 T-HANDLE) Platform Toolbox

| | | |
|--------------|--------------------|-----------------------|
| 725-40001-60 | 24"h x 24"d x 60"w | Dbl. Door D/P DS |
| 725-40021-60 | 24"h x 24"d x 60"w | Dbl. Door D/P PS |
| 725-40001-61 | 24"h x 24"d x 60"w | Dbl. Door Smth. DS |
| 725-40021-61 | 24"h x 24"d x 60"w | Dbl. Door Smth. PS |
| 725-41001-61 | 24"h x 24"d x 60"w | Dbl. Door ST/Steel DS |
| 725-41021-61 | 24"h x 24"d x 60"w | Dbl. Door ST/Steel PS |



Heavy Duty Platform Trailer Storage Boxes designed to handle the every day demands of use through Double Draw Latch system. The Draw Down Lockable T-Latch system secures the door top and bottom, plus seals the door by pulling the door down tight to provide a weather resistant storage box. Box is Reinforced inside for extra Strength.

Truck and Trailer Accessories



Tool Boxes

Aero SEVERE DUTY DOUBLE DOOR WITH CAM LOCK CLOSURE



725-41010-61 Aero designed Box
24"h x 24"d x 60"w Extreme Weather DBL DR D/S

725-41011-61 Aero Designed Box
24"h x 24"d x 60"w Extreme Weather DBL DR P/S



Severe Duty Platform Trailer Storage Boxes are designed to handle the every day demands of use through a cam-lock latch system. The cam lock system secures the door top and bottom, and seals the door by pulling the door down tight to provide a weather resistant storage box. The cam-lock is also lockable with a padlock through the swivel down

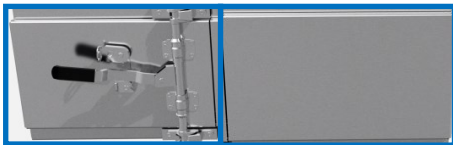
Replacement Tool Box Doors



EAST SERIES Standard Box 24X24X60 Double Smooth Door

725-04001-00 24" x 24" x 60" Latch Side Door Smooth With Hinge

725-04002-00 24" x 24" x 60" Non-Latch Door Smooth With Hinge



Aero Severe Duty Box With Cam Lock System

725-04010-00 24" x 24" x 60" D/S Cam Lock Door Smooth With Hinge

725-04020-00 24" x 24" x 60" D/S Non-Cam Door Smooth With Hinge

725-04011-00 24" x 24" x 60" P/S Cam Lock Door Smooth With Hinge

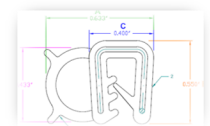
725-04021-00 24" x 24" x 60" P/S Non-Cam Door Smooth With Hinge

Tool Box Weather Seal

564-05037-00 Solid Tool Box seal East brand Boxes (Sold in Bulk)

564-05060-00 Aero Brand tool box seal (Aero Boxes) (Sold in Bulk)

725-00001-50 Tool Box Mounting Kit, Includes 2 No Notch Brackets and 2 Support Gussets



Truck and Trailer Accessories



Tool Boxes

ICONIC Brand Roll Up Door Tool Boxes Offered By East Aftermarket Parts.

No swinging doors. Great for tow trucks and service trucks that work in tight or dangerous spaces.
Full width stainless grab bar for easy open and close.
All-aluminum door with 3-year warranty.
Full rubber seals on doors keep water out.
Strong yet lightweight 1/8" thick 5052 aluminum body.
Same door used on EMS vehicles across North America



725-40010-36

24" X 24" X 36" Tool Box with Stainless Handle and Aluminum Roll Up Door Design

725-40010-48

24" X 24" X 48" Tool Box with Stainless Handle and Aluminum Roll Up Door Design



725-40010-60

24" X 24" X 60" Tool Box with Stainless Handle and Aluminum Roll Up Door Design

725-00001-50 Tool Box Mounting Kit, Includes 2 No Notch Brackets and 2 Support Gussets

Truck and Trailer Accessories



Specialty Tool Boxes Iconic

East Offered Specialty Tool Boxes

In Frame Tool Boxes With Mounting Kit, Offered in 2 sizes

Secure, padlockable, stainless steel slam latch for durability and longevity.

Simple 30-minute installation with included no drill frame mounting kit.

Strong, yet lightweight 0.125" aluminum construction.

Checker plate lid for grip.

Easily store DEF, tire chains, tools, etc...

Two box sizes for all applications.

22"W X 9"H X 24" D @ 35.26lbs

(Includes Mounting Kit)

725-40038-01



23"W X 13"H X 18" D @ 33.75lbs

(Includes Mounting Kit)

725-40038-02



Cab Storage Rack Tool Box
22" Wide Smooth Aluminum
(Mounting Angles Included)

725-40002-01



All East Offered Specialty Tool Boxes Come with Mounting Kits

Call an East Parts Associate For A Quote Today!!!

1-800-362-0851

Truck and Trailer Accessories



Cab Storage Racks Iconic

East Offered Cab Storage Racks



711-40041-70 Standard Storage Rack

68" High X 70" W, Full Chain Tray and Chain Racks (No Window)

(Mounting Kit Not Included)



711-40041-71 Combo Storage Rack

68" High X 70" W, Split Chain Tray and Chain Racks (With Window)

(Mounting Kit Not Included)



711-40041-72 Combo With 50Gal Hyd Tank

76" WIDE X 68" HIGH HEADACHE RACK-HYD TANK COMBO

(Mounting Kit Not Included)

More Options Available Upon Request, Reach Out to an East Part Sales Associate for a Quote.

Call an East Parts Associate and See How You Can Qualify for Free Freight On Your Order

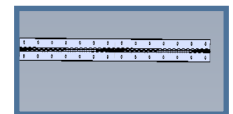
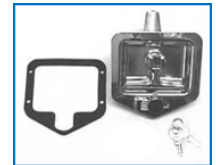
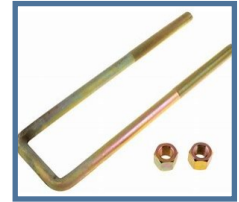
1-800-362-0851

Truck and Trailer Accessories



Accessories

| Part# | Item |
|--------------|---|
| 099-30821-00 | Standard U-Bolt Mounting Kit (18") Storage Racks |
| 546-05018-01 | U-Bolt Mounting Kit (24") Storage Racks |
| 712-30000-00 | Outside of Frame Mounting Kit (4 brackets per kit) |
| 712-20000-00 | 26"L Bolt On Lockable Chain Rack (10 chains) |
| 712-20000-01 | 26"L Extended Ultimate Lockable Chain Rack. |
| 712-20000-02 | 21"L Bolt On Lockable Chain Rack (8 chains) |
| 546-05081-00 | Weld On Grab Handle |
| 543-05001-18 | 18" Series Box Door cable (1ea) |
| 543-05001-26 | 24" Series Box Door Cable (1ea) |
| 546-05004-00 | Locking T-Latch with hardware Kit (Gasket, Key and Latch) |
| 546-05044-01 | Locking Draw Down T-Latch Kit (Roller Type) |
| 565-05021-01 | Backing Plate Draw Down T-Latch |
| 546-05043-02 | Roller Kit Draw Down Latch (Roller, Bolt and Lock Plate) |
| 725-10005-01 | 23" Replacement Piano Hinge 24" Box Door |
| 566-30802-00 | 18" Steel Tool Box Angle Mount Kit (2 Brackets Per Kit) |
| 566-05081-00 | 18" Steel Tool Box Angle Mount LH |
| 566-05081-01 | 18" Steel Tool Box Angle Mount RH |
| 566-30803-00 | 24" Steel Tool Box Angle Mount Kit (2 Brackets per kit) |
| 566-05082-00 | 24" Steel Universal Mount (Sold Individually) |



Truck and Trailer Accessories



EAST Aluminum Fenders

East Heavy Duty Fenders are constructed of high quality alloy 3/16" aluminum diamond plate & 3/16" smooth high bright aluminum for good looks, but also to provide strength, and long life protection of your valuable equipment. East Heavy Duty Fenders are radius end fenders extending down 90 degrees on the front and rear to provide increased protection. East Fenders also have a 1-1/8" lip on the inside & outside of the fender to provide even more strength and protection.



Half Tandem Fenders

- 099-10204-00 Diamond Plate 3/16" (without lips)
- 099-10204-02 Diamond Plate 3/16" (with inner & outer lips)
- 099-10204-10 Smooth High Bright Aluminum 3/16" (without lips)
- 099-10204-12 Smooth High Bright Aluminum 3/16" (with inner & outer lips)

Note: Above part numbers per each fender.



Full Tandem Fenders

- 099-10210-00 Diamond Plate 3/16" (without lips)
- 099-10210-02 Diamond Plate 3/16" (with inner & outer lips)
- 099-10210-10 Smooth High Bright 3/16" Aluminum (no lips)
- 099-10210-12 Smooth High Bright 3/16" Aluminum (with inner & outer lips)

Note: Above part numbers per each fender.



Single Axle Fenders

- 701-10003-00 Single Axle 38" / 19"R Diamond Plate Aluminum.
- 701-10003-01 Single Axle 38" / 19"R High Bright Smooth Aluminum

- 099-10201-00 Single Axle (no lips) Diamond Plate Aluminum
- 099-10201-02 Single Axle (with lips) Diamond Plate Aluminum

- 099-10201-10 Single Axle (no lips) High Bright Smooth Aluminum
- 099-10201-12 Single Axle (with lips) High Bright Smooth Aluminum

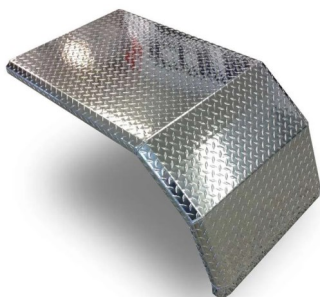
Note: Above part number represent individual fenders.

Iconic Half Tandem Fenders

- 099-10204-01 3/16 Tread Plate Aluminum Construction

48-5/8" L X 20-5/8" H x 26-7/8" W

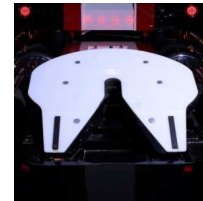
Note: Above part number represent individual fenders.



Truck and Trailer Accessories



MINIMIZER™ Poly FENDERS



New From Minimizer—Super Single Fenders

Now Available from East Manufacturing Heavy Duty Trucking Accessories

Go to www.eastmfg.com—click on the *Link* to open or download the Minimizer™ Catalog.

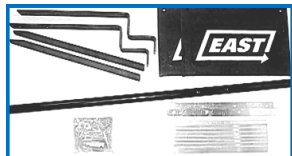
Contact an East Parts Representative to order Minimizer™ by calling:
800-362-0851 or Fax 330-325-8235

Truck and Trailer Accessories



EAST Brand Fender Mounting Kits

HPS-1 Half Fender (Crossover Pipe Mount)



566-05085-00
540-30808-01
099-10215-00 / 099-10218-00
532-05016-20
041-10002-00

95" crossover pipe
fender bolt kit
rear fender bracket (2 each part no.)
16" rubber mud flaps (2)
mud flap straps (2)

HPS-2 Half Fender (Stub Pipe Mount)



099-30201-00
540-30808-01
099-10215-00 / 099-10218-00
532-05016-20
041-10002-00

30" stub pipes mount (2)
fender bolt kit
rear fender bracket (2 each part no.)
16" rubber mud flaps (2)
mud flap straps (2)

FPS-1.5 Full Fender (Crossover front / Stub Pipe rear Mount)



566-05085-00
099-30201-00
540-30808-01
099-10215-00 / 099-10218-00
532-05016-20
041-10002-00

95" crossover pipe
30" stub pipes mount (2)
fender bolt kit
rear fender bracket (2 each part no.)
16" rubber mud flaps (4)
mud flap straps (4)

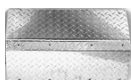
FPS-2 Full Fender (Stub Pipe front & rear Mount)



099-30201-00
540-30808-01
099-10215-00 / 099-10218-00
532-05016-20
041-10002-00

30" stub pipes mount (4)
fender bolt kit
rear fender bracket (2 each part no.)
16" rubber mud flaps (4)
mud flap straps (4)

Full Width Fender Caps (2 per half fender / 4 per full fender)



099-10221-00
099-10221-01

Full Width Fender Cap Diamond Plate
Full Width Fender Cap Smooth Aluminum

Truck and Trailer Accessories



X-Flex™ Fender Mounting Technology

The X-Flex™ Mounting Technology is Engineered to provide simple installation, and long lasting service.

The elimination of cracking in your tandem and single axle fenders is accomplished through the **Vibro-Wedge™** top radius mounting kit & the **Iso-Blok™** under side mounting kit.

By virtually eliminating the damaging effects of harmonic vibration, East Heavy Duty Fenders & the X-Flex™ Mounting Technology will give you a fender protection system which will keep your equipment looking good, as well as protection from the hazards laying in wait on the highway.



Application Guide



HALF TANDEM FENDERS

| Part Number | Description | Unit Of Measure |
|--------------|---|-----------------|
| 702-31004-06 | Rubber Mud Flap & Hardware Kit | 1 |
| 702-31005-06 | Plastic Mud Flap & Hardware Kit (optional) | (1) |
| 566-05226-06 | X-FLEX (U) Iso-Blox™ Mounting Kit with RoadKote finish | 1 |
| 566-05227-06 | X-FLEX (TR) VibroWedge™ Mounting Kit with RoadKote finish | 1 |
| 566-05228-06 | X-FLEX (TR) VibroWedge™ Mounting Kit with STAINLESS PIPE (optional) | (1) |

FULL TANDEM FENDERS

| Part Number | Description | Unit Of Measure |
|--------------|---|-----------------|
| 702-31004-06 | Rubber Mud Flap & Hardware Kit | 2 |
| 702-31005-06 | Plastic Mud Flap & Hardware Kit (optional) | (2) |
| 566-05226-06 | X-FLEX (U)™ Iso-Blox™ Mounting Kit with RoadKote finish | 1 |
| 566-05227-06 | X-FLEX (TR) VibroWedge™ Mounting Kit with RoadKote finish | 2 |
| 566-05228-06 | X-FLEX (TR) VibroWedge™ Mounting Kit with STAINLESS PIPE (optional) | (2) |

SINGLE AXLE FENDERS

| Part Number | Description | Unit Of Measure |
|--------------|---|-----------------|
| 702-31004-06 | Rubber Mud Flap & Hardware Kit | 1 |
| 702-31005-06 | Plastic Mud Flap & Hardware Kit (optional) | (1) |
| 566-05227-06 | X-FLEX (TR) VibroWedge™ Mounting Kit with RoadKote finish | 2 |
| 566-05228-06 | X-FLEX (TR) VibroWedge™ Mounting Kit with STAINLESS PIPE (optional) | (2) |

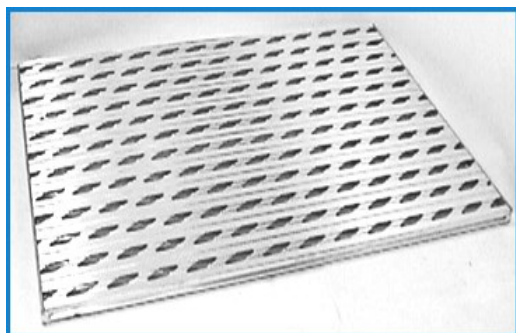
NOTE: The above application guide is intended to be a general guide to help in the installation of the above fenders. Because of the large number of possible mounting configurations, the installer is responsible for the ultimate installation. Any modifications to the brackets or fenders are at the discretion, responsibility, and risk of the installer. The above kit may not fit all truck models or types of suspensions. Check the truck manufacturer for suspension movement and specifications.

Truck and Trailer Accessories



Deck Plate and Frame Steps

Extruded Deck Plates



Extruded deck plates constructed of 6061 T-6 aluminum

with reinforcements every two inches for add strength and durability.

Extruded deck plates are all welded construction to insure strength and longevity.

Surface is knurled with holes punched for safety during wet or freezing conditions.

Easy and quick installation when utilizing the extruded mounting kit.

(part no. 099-15001-00)

| | | |
|----------|--------------|-------------|
| Part No. | 559-05037-06 | 6" w x 57L |
| Part No. | 099-30028-24 | 33"w x 24"L |
| Part No. | 099-30028-36 | 33"w x 36"L |
| Part No. | 099-30028-48 | 33"w x 48"L |
| Part No. | 099-30028-60 | 33"w x 60"L |
| Part No. | 099-30028-72 | 33"w x 72"L |

Extruded Deck Plate Mounting Kit



Mounting kit designed especially for the extruded deck plate for fast and easy installation.

Mounting instruction sheet enclosed with kit.

B
A

4ea - Top Sliding Plates (item A)

4ea - Bottom Knurled Mounting Plates (item B)

4ea - Bolt/Nuts/Washers

1ea - Mounting Instruction Sheet

Part No. 099-15001-00 Extruded Deck Plate Mounting Kit

Bolt-On Tractor Frame Steps



Lightweight alum tractor steps 3/16" diamond plate aluminum and smooth 3/16" mounting plate.

Frame step is an all weld construction for strength and durability.

Solid non drilled mounting plate allows step to be mounted in various places on the truck.

Step material is an extruded 6061 T-6 aluminum with punch outs and knurling to enhance safety on wet or freezing conditions.

Part No. 099-30017-12
Part No. 099-30017-18

12"w Bolt-On Tractor Frame Steps
18"w Bolt-On Tractor Frame Steps

Truck and Trailer Accessories



Hydraulic Reservoir Tank Kits

Hydraulic Reservoir Tank Kits

Hydraulic tanks hold hydraulic oil required for operating wet systems. Rugged steel or aluminum tanks available in 35 to 75 gallon capacity. Tanks available in an upright, square, or round design. **Part numbers include mounting kit.**



506-25070-03



506-25950-03



506-25036-03

| | | | |
|----------|---------------------|----------------------------|-----------------------|
| Part No. | 506-25035-03 | 35-gallon aluminum round | 24" Diameter x 19"L |
| Part No. | 506-25036-03 | 35-gallon steel round | 24" Diameter x 19"L |
| Part No. | 506-25050-03 | 50-gallon aluminum upright | 34" L x 13" W x 26" H |
| Part No. | 506-25070-03 | 70-gallon aluminum upright | 46.5"L x 13"W x 26"H |
| Part No. | 506-25150-03 | 50-gallon steel upright | 34"L x 13"W x 26"H |
| Part No. | 506-25170-03 | 70-gallon steel upright | 46.5"L x 13"W x 26"H |
| Part No. | 506-25950-03 | 50-gallon aluminum round | 24" Diameter x 27" L |
| Part No. | 506-25970-03 | 75-gallon aluminum round | 24" Diameter x 39" L |

Hydraulic Hoses

1" High Pressure

| | | |
|----------|---------------------|-----------------------|
| Part No. | 504-05018-16 | 1" High Pressure 18" |
| Part No. | 504-05024-16 | 1" High Pressure 24" |
| Part No. | 504-05030-16 | 1" High Pressure 30" |
| Part No. | 504-05036-16 | 1" High Pressure 36" |
| Part No. | 504-05148-16 | 1" High Pressure 48" |
| Part No. | 504-05160-16 | 1" High Pressure 60" |
| Part No. | 504-05173-16 | 1" High Pressure 73" |
| Part No. | 504-05190-16 | 1" High Pressure 90" |
| Part No. | 504-05118-16 | 1" High Pressure 108" |

1 1/4" Low Pressure

| | | |
|----------|---------------------|--------------------------|
| Part No. | 504-05018-20 | 1 1/4" Low Pressure 18" |
| Part No. | 504-05024-20 | 1 1/4" Low Pressure 24" |
| Part No. | 504-05030-20 | 1 1/4" Low Pressure 30" |
| Part No. | 504-05036-20 | 1 1/4" Low Pressure 36" |
| Part No. | 504-05048-20 | 1 1/4" Low Pressure 48" |
| Part No. | 504-05060-20 | 1 1/4" Low Pressure 60" |
| Part No. | 504-05073-20 | 1 1/4" Low Pressure 73" |
| Part No. | 504-05090-20 | 1 1/4" Low Pressure 90" |
| Part No. | 504-05108-20 | 1 1/4" Low Pressure 108" |

Hydraulic Hoses are pre-crimped with NPT(1"HP / 1 1/4"LP) ends. Hoses meet DOT Standards for Pressure Ratings.

Truck and Trailer Accessories



Hydraulic Wet -Line Kits

ONLY EAST PACKS A COMPLETE WET-LINE SYSTEM IN ONE EASY KIT.

We'll pack a kit tailor made for your truck. There's only one easy way to order a complete wet-line system.

East makes it easy by providing all the components you need and exactly the components you need.

A single phone call to East is all it takes. We'll deliver a kit with the following components matched to the specifications of your drivetrain, chassis and haul consideration

Pump
PTO
Hoses*
In-cab
Reservoir Tank
Required fittings



controls

Here's all it takes to spec an East wet-line kit.

East makes it easy. You can depend on us for all the technical assistance and hydraulic system knowledge necessary to accurately spec a complete wet-line system.

These four easy steps are all it takes:

- 1 Gather all the essential information, model & make of your transmission, location of you reservoir and trailer information.
- 2 Call East. One of our Customer Service specialists will process your information immediately.
- 3 We'll call you back with complete specifications and cost of your wet-line kit.
- 4 You'll receive your East wet-line kit within days of placing your order.

*SIZES MAY VARY WITH TRUCK APPLICATIONS.

East Manufacturing stocks *Chelsea* PTO's and *Permco* pumps as our first line Hydraulic Components.

**To make sure you have all the right numbers, just remember this one
Number: 1-800-362-0851 - We'll take care of the rest.**

Or refer to the Wet-Line Kit Catalog located on our website -

www.eastmfg.com

Truck and Trailer Accessories



Warranty

EAST Manufacturing Corporation warrants each new standard heavy-duty trucking accessory to be free of defects in material and workmanship for one (1) full year from date of purchase, provided that the part in question is installed per EAST approved standards and used/operated in accordance with generally approved practices. Any part found to be defective within the warranty period shall be repaired or replaced (at East's sole option) at East's factory or authorized service center provided, however, the purchaser notifies EAST or an authorized distributor as soon as any defect becomes apparent.

The purchaser agrees to return the defective part to EAST'S factory location or authorized service facility, freight prepaid, within 15 days after the defective condition is discovered. This warranty also excludes the following: normal wear, deterioration, misuse, or accidental damage to the part in question.

This warranty expressly excludes the labor involved in removing and reinstalling the accessory on the customer's equipment. EAST and the purchaser agree that, in consideration of the above expressed warranty, all other warranties other than the title, either expressed or implied, whether arising under law or equity including warranties of merchantability and fitness for a particular purpose are excluded from this contract.

Further, the foregoing warranty is made solely to the first purchase from EAST MANUFACTURING CORPORATION or from an authorized distributor.

The sole liability of EAST and the exclusive remedy of the purchaser arising out of the manufacture, sale or use of the parts involved hereunder, on warranties or otherwise, shall be limited to the cost of repair or replacement of the defective part as herein specified.



NOTES

Toll Free (800) 362-0851

Fax (330) 325 8235

Website www.eastmfg.com



East Manufacturing Corporation
1871 State Route 44 * PO Box 277
Randolph, Ohio 44265 USA
Toll Free (800) 362-0851
Fax (330) 325 8235
Website www.eastmfg.com