

Heavy Duty
Trucking
Accessories



Catalog



Heavy Duty Trucking Accessories



Welcome to East Heavy Duty Trucking Accessories

For more than 40 years, you've relied on EAST MFG. to go beyond all others in the industry. To use the most durable materials, & build only highest quality heavy duty equipment. Now we offer you that same quality and assurance in our aluminum heavy-duty trucking accessories. Not only can we enhance the appearance of your truck, but add to its value and safety with a variety of professional products. All made from the same long lasting, rugged materials you've come to expect from EAST. Only from



Making The Extra Effort.

Aluminum offers greater pound-for-pound strength than steel, yet weighs considerably less. It's also corrosion resistant, doesn't peel or chip, and never needs painted. After years of use East aluminum accessories look like new after simple polishing. Brand name reliability, extensive year-round stock, fast delivery, and a written guarantee. Our vision at East Manufacturing is to become the standard of excellence in the truck-trailer industry by promising you that your best interests is our priority and that we want to -

East Manufacturing Corporation * 1871 State Route 44 * Randolph, Ohio 44265 * 800-362-0851 * Fax 330-325-8235



Heavy Duty Trucking Accessories



Table of Contents

	Page No.
Tool Boxes	4—7
Cab Storage Racks	8—10
Pro Series Fenders	11—13
Extruded Deck Plates / Frame Steps	14
Tire Chain Carrier / Reflective Tape	15
Hydraulic Reservoir Kits / Hydraulic Hoses	16
Hydraulic Wet Kit	17
Warranty	18

Heavy Duty Trucking Accessories



Tool Boxes

Underbody mounted boxes with front open door constructed of quality aluminum. Extruded door frame for added strength. Extruded door frame inset groove to accommodate 3/8" reflective tape for enhanced nighttime visibility. Quality draw down T-Latch to provide a secure door closure.

Diamond Plate Aluminum Door



725-40004-24	18"h x 18"d x 24"L
725-40004-30	18"h x 18"d x 30"L
725-40004-36	18"h x 18"d x 36"L
725-40004-48	18"h x 18"d x 48"L

Smooth Aluminum Door



725-40004-25	18"h x 18"d x 24"L
725-40004-31	18"h x 18"d x 30"L
725-40004-37	18"h x 18"d x 36"L
725-40004-49	18"h x 18"d x 48"L

Mirror Stainless Steel Door



725-41004-24	18"h x 18"d x 24"L
725-41004-30	18"h x 18"d x 30"L
725-41004-36	18"h x 18"d x 36"L
725-41004-48	18"h x 18"d x 48"L

Mounting Brackets



566-30802-00	18" Pair Steel 2" x 2" Angle
566-30803-00	24" Pair Steel 2" x 2" Angle

Heavy Duty Trucking Accessories



Tool Boxes

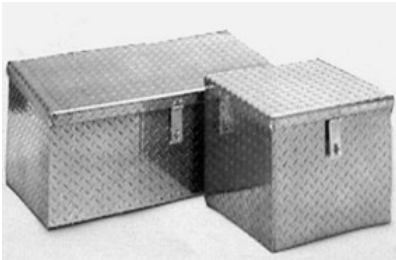
Top mounted boxes with flip open lid constructed of quality aluminum. Extruded lid frame for added strength. Extruded lid frame inset groove to accommodate 3/8" reflective tape for enhanced nighttime visibility. Quality slam T-Latch or special draw down hasp to provide a secure door closure .

Diamond Plate Aluminum Lid



725-30009-24	18"h x 18"d x 24"w
725-30009-30	18"h x 18"d x 30"w
725-30009-36	18"h x 18"d x 36"w
725-30009-48	18"h x 18"d x 48"w

Economy All Diamond Plate

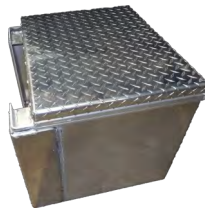


725-30003-16	16"h x 16"d x 16"w
725-30003-30	12"h to 14"h x 14"d x 30"w
725-30003-32	14" to 16"h x 16"d x 32"w

Top Open Heavy Duty Fairing Box



725-30054-00 21"h x 20"d x 24"w



With mounting brackets incorporated on box.

Heavy Duty Trucking Accessories



Tool Boxes

Between The Frame



Part No. 725-40038-00

- ◆ Constructed from 3/16" smooth and diamond plate aluminum.
- ◆ Solid rubber lid seal for better protection from the weather.
- ◆ Lid is secured by special camber draw-down hasp with locking capability.
- ◆ Easy installation by use of incorporated mounting plates.
- ◆ Mounting bolts sealed with rubber washers to insure items stay dry inside box.
- ◆ Inset in extruded door frame to install 3/8" reflective tape for enhanced nighttime visibility.

10"H X 26"D X 24" Between The Frame Tool Box

Storage Rack Box



Part No. 725-30050-00
Part No. 099-10025-24

- ◆ Constructed from 3/16" smooth and diamond plate aluminum.
- ◆ Solid rubber lid seal for better protection from the weather.
- ◆ Lid is secured by special camber draw-down hasp with locking capability.
- ◆ Ideal for secure storage of load straps, winches, etc. from the weather.
- ◆ Mounting plate secured under legs of storage rack and box mounted on plate. (not included)
- ◆ Inset in extruded door frame to install 3/8" reflective tape for enhanced nighttime visibility.

14"H X 20"D X 24"L Between Leg Cab Protector Box 33"W X 24"L X 3/16" Diamond Plate Mounting Plate

Step N Store II



Part No. 725-40036-00
Part No. 725-40036-01
Part No. 725-40036-02
Part No. 725-40036-03

- ◆ Frame mounted tool box which serves as a storage area and step to access the rear of the tractor.
- ◆ Constructed of 3/16" aluminum, and extruded knurled step and top platform material for safety.
- ◆ Door is smooth aluminum with stainless lockable T-Latch and lock cover.
- ◆ Aluminum piano door hinge riveted and welded for durability.
- ◆ Solid rubber seal to provide increased protection from the weather.
- ◆ Mounting brackets recommended on the 30" & 36" models. (part no. 566-30802-00)
- ◆ Top face extrusion with inset groove to install 1" reflective tape to enhance nighttime visibility.

17"H X 22"D X 18"L Step N Store II
17"H X 22"D X 24"L Step N Store II
17"H X 22"D X 30"L Step N Store II
17"H X 22"D X 36"L Step N Store II

Saddle Side Step Box



Part No. 725-40002-18
Part No. 725-40002-24

- ◆ Aluminum Construction of Smooth Box & Diamond Plate Door.
- ◆ Stainless Steel Locking T-Latch Assembly for Added Security.
- ◆ Full Length Stainless Steel Piano Hinge.
- ◆ Positive Rubber Door Seal for Enhanced Protection from the Weather.
- ◆ Aluminum Strut Grip Step & Platform for Solid / Safe Footing.

22" x 28.5" x 18" Side Step Box
22" x 28.5" x 24" Side Step Box

Cube Box (side open)



- ◆ Front side open door with extruded aluminum door frame for added strength.
- ◆ Solid rubber weather seal to increase protection from the weather elements.
- ◆ Stainless steel lockable T-Latch with weather resistant lock cover.
- ◆ Tool box constructed of 3/16" diamond plate and 3/16" smooth finish aluminum.
- ◆ Mounting Brackets recommended for side frame mounting. (part no. 566-30803-00)
- ◆ Inset in extruded door frame to install 3/8" reflective tape for enhanced nighttime visibility.

Part No. 725-40001-00
Part No. 725-40001-01

24"H X 24"D X 24"L Side Open Diamond Plate Door
24"H X 24"D X 24"L Side Open Smooth Finish Door

Tool Box Mounting Brackets



- ◆ Angle mounting brackets used when mounting tool boxes to the side of frame.
- ◆ Brackets constructed of 2" x 2" x 1/4" steel angle in 90 degree with angled knee brace welded across corner for additional strength.
- ◆ Brackets are powder painted black for appearance and protection against the weather elements.

Part No. 566-30802-00
Part No. 566-30803-00

18"H X 18"D Steel Mounting Brackets (18 series toolboxes)
24"H X 24"D Steel Mounting Brackets (24 series toolboxes)

Tool Box Replacement Parts

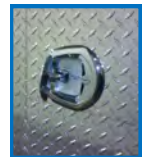
Part No. 546-05004-02 Stainless Steel Locking T-Latch, w/ hardware kit. (nuts, washers, gasket)
Part No. 546-05044-00 Chrome Draw-Down T-Latch



Part No. 543-05001-18 Door cable (1 ea.) for 18 series box
Part No. 543-05001-26 Door cable (1 ea.) for 24 series box

Part No. 725-10022-00 Door Cable Restraint Mounting Angle (weld on - 4 required per box)

Part No. 564-05037-00 Solid rubber door weather seal (per foot)



Bolt-On Tool Box Step

Part No. 725-20041-24 24" wide Bolt On Step
Part No. 725-20041-30 30" wide Bolt On Step
Part No. 725-20041-36 36" wide Bolt On Step
Part No. 725-20041-48 48" wide Bolt On Step



Cab Storage Racks CSR

Extruded Steel Hauler



- ◆ Extruded aluminum provides strength, yet weighs less than other models with the same solid construction.
- ◆ Extruded 26"L (10 chain capacity each) chain racks, incorporated into storage rack with lockable covers to secure chains.
- ◆ Full width chain tray has depth of 8" and height of 8" for low profile close turning radius clearance.
- ◆ Inset groove in extrusions to install 1" reflective tape to enhance esthetics and nighttime visibility.
- ◆ Reflective tape available in eight different colors. (black reflective tape is standard)

Bolt on handle and mounting kit included in price.

Note: Standard Window is 20" x 20" x 3/4" solid aluminum bars.

Part No. 711-40040-83*

140# 65"h x 83 1/2"w Extruded Steel Hauler.

Part No. 711-40040-84*

143# 65"h x 83 1/2"w Extruded Steel Hauler, with 20" x 20" Window.

Combo Steel Hauler



- ◆ Combination of extruded 6061 T-6 aluminum and 3/16" diamond plate aluminum which combines strength, yet lightweight construction with beauty of diamond plate aluminum.
- ◆ Two locking chain racks (21"l on 70"w models & 26"L on 87 1/2"w models)
- ◆ Full width tray to accommodate up to 20 chains.
- ◆ Inset groove in extrusions to install 1" reflective tape to enhance esthetics and nighttime visibility.
- ◆ Reflective tape available in eight different colors. (black reflective tape is standard)

Bolt on handle and mounting kit included in price.

Note: Standard Window is 20" x 20" x 3/4" solid aluminum bars.

Part No. 711-40020-01*

182# 72"h x 76"w Combo CH Steel Hauler , Split Trays w/ lids, 20" x 30" Window.

Part No. 711-40020-03*

182# 72"h x 76"w Combo CH Steel Hauler , Full Tray w/ lid, 20" x 30" Window.

Part No. 711-40040-70*

155# 65"h x 70"w Combo Steel Hauler, Day Cab Model.

Part No. 711-40040-71*

161# 65" X 70"w Combo Steel Hauler, Day Cab Model, with 20" x 20" Window

Part No. 711-40045-83*

171# 65"h x 83 1/2"w Combo Steel Hauler.

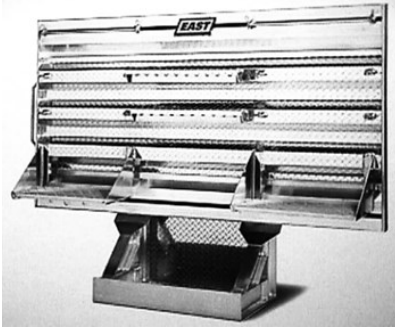
Part No. 711-40045-84*

171# 65"h x 83 1/2"w Combo Steel Hauler, with 20" x 20" Window.

* See page 10 for *Operational Usage* and *Installation / Maintenance* for the East CSR.

Cab Storage Racks CSR

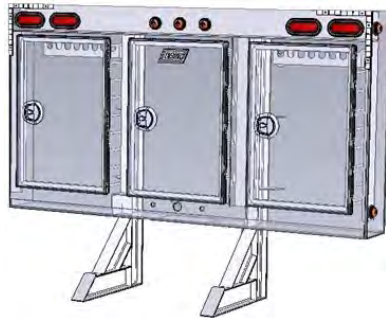
Combo Ultimate Steel Hauler



- ◆ Combination of extruded 6061 aluminum and 3/16" diamond plate aluminum which combines strength, yet light-weight construction with the good looks of diamond plate.
- ◆ One 26" lockable chain rack to accommodate 10 chains or chain lever or ratchet binders.
- ◆ One 26" extended lockable chain rack to accommodate 10 chains.
- ◆ Two racks to accommodate 8 coil rack retainers.
- ◆ Two shelves to store rolled up tarps.
- ◆ Three rack storage areas on rear of unit to store 4 x 4 wood.
- ◆ Tray between support legs for chains to hang into and extra items storage.
- ◆ Holes located on lower driver side to install air fittings and 7 way electrical plug.
- ◆ Inset groove in extrusions to install 1" reflective tape to enhance nighttime visibility.

Part No. 711-40050-00* 190# 83 1/2"w x 65"h Combo Ultimate Steel Hauler. (bolt on handle and mounting kit included in price)

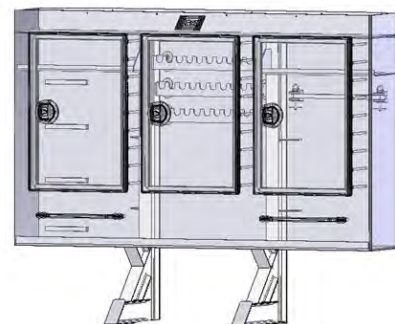
Deluxe Cabinet Model



- ◆ Three door cabinet constructed of 3/16" diamond plate aluminum and extruded 6061 aluminum.
- ◆ Three weather proof doors with chrome lockable draw-down stainless steel t-latches.
- ◆ Chain racks in two outer compartments to accommodate a total of 20 chains, and / or binders.
- ◆ Lighting is all LED with 3 red marker lights on top center and 4 amber marker lights on each side of unit.
- ◆ 4 model 60 stop/ tail / turn lights in top of unit, plus all lighting is connected by a sealed harness system.
- ◆ Holes in bottom center of unit to install 2 air fittings and 7 way electrical plug with harness out rear of cabinet.
- ◆ Inner cabinet dimensions are 8"d x 48"h x 86"w with center compartment for storage of rolled tarp.
- ◆ Legs mounted on interior of cabinet so unit may be mounted as close as possible to back of cab.
- ◆ All wiring is enclosed on channels in the sides top and bottom of unit for clutter free look.

Part No. 711-40060-01* 410# 87 1/2"w x 65"h Deluxe Cabinet Model. (bolt on handle and mounting kit included in price)

Ultimate Steel Hauler Cabinet Model



- ◆ Three door cabinet constructed of 3/16" diamond plate aluminum and extruded 6061 aluminum.
- ◆ Three weather proof doors with chrome lockable draw-down stainless steel t-latches.
- ◆ Chain racks in center compartment to accommodate a total of 30 chains, and / or binders.
- ◆ Shelves in outer compartments located in upper area for strap storage.
- ◆ Open storage area on top of unit for storage of 4 x 4 wood or tarps.
- ◆ Inner cabinet dimensions are 15"d x 48"h x 86"w .
- ◆ Legs mounted on interior of cabinet so unit may be mounted as close as possible to back of cab.
- ◆ Passenger compartment contains rack for storing coil rack retainers
- ◆ Bolt on handles on both sides of unit along lower edge.
- ◆ Bottom and back of unit constructed of 1/4" aluminum with reinforcement plates for chain racks.
- ◆ Tarp strap storage on inside of drivers door.

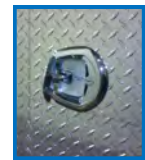
Part No. 711-40060-01* 460# 87 1/2"w x 65"h Three Door Ultimate Cabinet (15"D) (mounting kit included in price)

* See page 10 for *Operational Usage* and *Installation / Maintenance* for the East CSR.

Cab Storage Racks

Storage Rack Accessories

Part No.	099-30821-00	Standard U-Bolt Mounting Kit (18")
Part No.	546-05018-01	U-Bolt Mounting Kit (24")
Part No.	712-30000-00	Outside of Frame Mounting Kit (4 brackets per kit)
Part No.	712-20000-00	26"L Bolt On Lockable Chain Rack (10 chains)
Part No.	712-20000-01	26"L Extended Ultimate Lockable Chain Rack.
Part No.	712-20000-02	21"L Bolt On Lockable Chain Rack (8 chains)
Part No.	712-20011-00	Bolt on Chain Tray for 83 1/2"w Storage Racks
Part No.	712-20011-01	Bolt on Chain Tray for 70"w Storage Racks
Part No.	712-20011-02	Bolt on 26"L Split Chain Tray
Part No.	546-05011-00	Bolt on Grab Handle
Part No.	542-11125-04	Stainless Countersunk 1/4" x 1 1/4" Screw (4 required)
Part No.	542-14000-04	Stainless 1/4" Nylon Lock Nut (4 required)
Part No.	535-05004-20	11" DOT Clear Reflector
Part No.	535-05005-20	12" DOT Clear Reflector
Part No.	546-05004-02	Locking T-Latch Kit
Part No.	546-05044-00	Locking T-Latch Kit (NEW STYLE)
Part No.	535-15375-20	Red Model 30 LED Clearance Light
Part No.	535-15376-20	Amber Model 30 LED Clearance Light
Part No.	535-05961-20	Grommet Model 30 Light
Part No.	535-15260-20	Red Model 60 LED Stop & Tail Light
Part No.	535-05607-20	Grommet Model 60 Light



* **WARNING**  **OPERATIONAL USAGE CSR** (Cab Storage Rack)

Drivers and Owners are responsible for complying with the **FMCSA/D.O.T.** Regulations to secure and monitor the cargo load. NOT complying with the **FMCSA/D.O.T.** Regulations to secure and monitor the cargo load could result in death or serious injury.

- NO cargo loads are to be in contact with or affixed in any manner to the East Cab Storage Rack (CSR).
- The East CSR is NOT designed to stop or minimize movement of cargo or intended to protect persons inside the truck's cab in the event of any cargo becoming loose as a result of an accident or failed cargo securement device or system.
- The East CSR is not a substitute for any securement device prescribed by law.
- Use of the East CSR does not change or reduce the load securement requirements imposed by law.

* **WARNING**  **INSTALLATION/ MAINTENANCE CSR** (Cab Storage Rack)

The East CSR must be properly installed per the instruction manual. NOT properly installing the East CSR could result in death or serious injury. Read all manuals and safety information on website before installing.

The East CSR and platform must NOT have damaged or weakened components. A damaged CSR could result in death or serious injury. See manual on how to inspect and properly maintain the East CSR.

Modifications to the East CSR may damage or weaken the CSR. A weakened CSR could result in death or serious injury. See manual for what modifications can be made to the CSR.

Heavy Duty Trucking Accessories



Fenders

East Heavy Duty Fenders are constructed of high quality alloy 3/16" aluminum diamond plate & 3/16" smooth high bright aluminum for good looks, but also to provide strength, and long life protection of your valuable equipment. East Heavy Duty Fenders are radius end fenders extending down 90 degrees on the front and rear to provide increased protection. East Fenders also have a 1-1/8" lip on the inside & outside of the fender to provide even more strength and protection.

Half Tandem Fenders



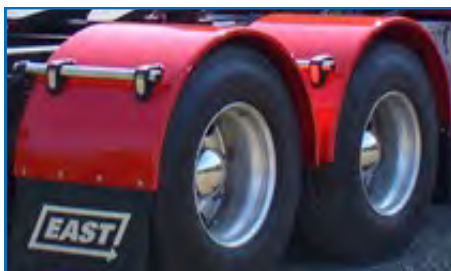
099-10204-00	Diamond Plate 3/16" (without lips)	(per each)
099-30801-00	Diamond Plate 3/16" (without lips)	(per pair)
099-10204-02	Diamond Plate 3/16" (with inner & outer lips)	(per each)
099-30802-20	Diamond Plate 3/16" (with inner & outer lips)	(per pair)
099-10204-10	Smooth High Bright Aluminum 3/16" (without lips)	(per each)
099-30801-10	Smooth High Bright Aluminum 3/16" (without lips)	(per pair)
099-10204-12	Smooth High Bright Aluminum 3/16" (with inner & outer lips)	(per each)
099-30802-10	Smooth High Bright Aluminum 3/16" (with inner & outer lips)	(per pair)

Full Tandem Fenders



099-10210-00	Diamond Plate 3/16" (without lips)	(per each)
099-30803-00	Diamond Plate 3/16" (without lips)	(per pair)
099-10210-02	Diamond Plate 3/16" (with inner & outer lips)	(per each)
099-30804-20	Diamond Plate 3/16" (with inner & outer lips)	(per pair)
099-10210-10	Smooth High Bright 3/16" Aluminum (without lips)	(per each)
099-30803-10	Smooth High Bright 3/16" Aluminum (without lips)	(per pair)
099-10210-12	Smooth High Bright 3/16" Aluminum (with inner & outer lips)	(per each)
099-30804-10	Smooth High Bright 3/16" Aluminum (with inner & outer lips)	(per pair)
099-10210-55	Sm Alum. High Bright 3/16" 55" wheel spacing (inner & outer lips)	(per each)
099-30804-55	Sm Alum. High Bright 3/16" 55" wheel spacing (inner & outer lips)	(per pair)

Single Axle Fenders



710-10003-00	Single Axle 38" / 19"R Diamond Plate 3/16" Aluminum	(per each)
710-10003-01	Single Axle 38" / 19"R High Bright Smooth 3/16" Aluminum	(per each)
099-10210-00	Single Axle (without lips) Diamond Plate 3/16" Aluminum	(per each)
099-10210-02	Single Axle (with inner & outer lips) Diamond Plate 3/16" Aluminum	(per each)
099-30805-00	Single Axle (with inner & outer lips) Diamond Plate 3/16" Aluminum	(per pair)
099-10210-10	Single Axle (without lips) High Bright Smooth 3/16" Aluminum	(per each)
099-10210-12	Single Axle (with inner & outer lips) High Bright Smooth 3/16" Alum.	(per each)
099-30805-10	Single Axle (with inner & outer lips) High Bright Smooth 3/16" Alum.	(per pair)

Heavy Duty Trucking Accessories



Fenders

HPS-1 Half Fender (Crossover Pipe Mount)



566-05085-00
540-30808-01
099-10215-00 / 099-10218-00
532-05016-20
041-10002-00

95" crossover pipe
fender bolt kit
rear fender bracket (2 each part no.)
16" rubber mud flaps (2)
mud flap straps (2)

HPS-2 Half Fender (Stub Pipe Mount)



099-30201-00
540-30808-01
099-10215-00 / 099-10218-00
532-05016-20
041-10002-00

30" stub pipes mount (2)
fender bolt kit
rear fender bracket (2 each part no.)
16" rubber mud flaps (2)
mud flap straps (2)

FPS-1.5 Full Fender (Crossover front / Stub Pipe rear Mount)



566-05085-00
099-30201-00
540-30808-01
099-10215-00 / 099-10218-00
532-05016-20
041-10002-00

95" crossover pipe
30" stub pipes mount (2)
fender bolt kit
rear fender bracket (2 each part no.)
16" rubber mud flaps (4)
mud flap straps (4)

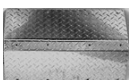
FPS-2 Full Fender (Stub Pipe front & rear Mount)



099-30201-00
540-30808-01
099-10215-00 / 099-10218-00
532-05016-20
041-10002-00

30" stub pipes mount (4)
fender bolt kit
rear fender bracket (2 each part no.)
16" rubber mud flaps (4)
mud flap straps (4)

Full Width Fender Caps (2 per half fender / 4 per full fender)



099-10221-00
099-10221-01

Full Width Fender Cap Diamond Plate
Full Width Fender Cap Smooth Aluminum

Heavy Duty Trucking Accessories



X-Flex™ Fender Mounting Technology

The X-Flex™ Mounting Technology is Engineered to provide simple installation, and long lasting service. The elimination of cracking in your tandem and single axle fenders is accomplished through the **Vibro-Wedge™** top radius mounting kit & the **Iso-Blok™** under side mounting kit. By virtually eliminating the damaging effects of harmonic vibration.

East Heavy Duty Fenders & the X-Flex™ Mounting Technology will give you a fender protection system which will keep your equipment looking good, as well as protection from the hazards laying in wait on the highway.



Application Guide



HALF TANDEM FENDERS

Part Number	Description	Unit Of Measure
702-31004-06	Rubber Mud Flap & Hardware Kit	1
702-31005-06	Plastic Mud Flap & Hardware Kit (optional)	(1)
566-05226-06	X-FLEX (U) Iso-Blox™ Mounting Kit with RoadKote finish	1
566-05227-06	X-FLEX (TR) VibroWedge™ Mounting Kit with RoadKote finish	1
566-05228-06	X-FLEX (TR) VibroWedge™ Mounting Kit with STAINLESS PIPE (optional)	(1)

FULL TANDEM FENDERS

Part Number	Description	Unit Of Measure
702-31004-06	Rubber Mud Flap & Hardware Kit	2
702-31005-06	Plastic Mud Flap & Hardware Kit (optional)	(2)
566-05226-06	X-FLEX (U)™ Iso-Blox™ Mounting Kit with RoadKote finish	1
566-05227-06	X-FLEX (TR) VibroWedge™ Mounting Kit with RoadKote finish	2
566-05228-06	X-FLEX (TR) VibroWedge™ Mounting Kit with STAINLESS PIPE (optional)	(2)

SINGLE AXLE FENDERS

Part Number	Description	Unit Of Measure
702-31004-06	Rubber Mud Flap & Hardware Kit	1
702-31005-06	Plastic Mud Flap & Hardware Kit (optional)	(1)
566-05227-06	X-FLEX (TR) VibroWedge™ Mounting Kit with RoadKote finish	2
566-05228-06	X-FLEX (TR) VibroWedge™ Mounting Kit with STAINLESS PIPE (optional)	(2)

NOTE: The above application guide is intended to be a general guide to help in the installation of the above fenders. Because of the large number of possible mounting configurations, the installer is responsible for the ultimate installation. Any modifications to the brackets or fenders are at the discretion, responsibility, and risk of the installer. The above kit may not fit all truck models or types of suspensions. Check the truck manufacturer for suspension movement and specifications.

Heavy Duty Trucking Accessories



Deck Plate and Frame Steps

Extruded Deck Plates



Extruded deck plates constructed of 6061 T-6 aluminum with reinforcements every two inches for add strength and durability. Extruded deck plates are all welded construction to insure strength and longevity.

Surface is knurled with holes punched for safety during wet or freezing conditions. Easy and quick installation when utilizing the extruded mounting kit. (part no. 099-15001-00)

Part No.	099-30028-24	33"w x 24"L
Part No.	099-30028-36	33"w x 36"L
Part No.	099-30028-48	33"w x 48"L
Part No.	099-30028-60	33"w x 60"L
Part No.	099-30028-72	33"w x 72"L

Extruded Deck Plate Mounting Kit



Mounting kit designed especially for the extruded deck plate for fast and easy installation. Mounting instruction sheet enclosed with kit.

- 4ea - Top Sliding Plates (item A)
- 4ea - Bottom Knurled Mounting Plates (item B)
- 4ea - Bolt/Nuts/Washers
- 1ea - Mounting Instruction Sheet

Part No. 099-15001-00 Extruded Deck Plate Mounting Kit

Bolt-On Tractor Frame Steps



Lightweight alum tractor steps 3/16" diamond plate aluminum and smooth 3/16" mounting plate. Frame step is an all weld construction for strength and durability. Solid non drilled mounting plate allows step to be mounted in various places on the truck. Step material is an extruded 6061 T-6 aluminum with punch outs and knurling to enhance safety on wet or freezing conditions.

Part No. 099-30017-12
Part No. 099-30017-18

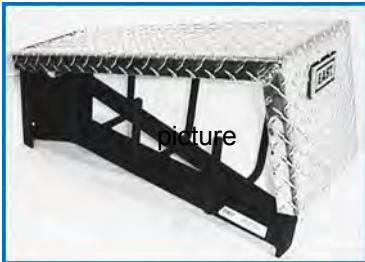
12"w Bolt-On Tractor Frame Steps
18"w Bolt-On Tractor Frame Steps

Heavy Duty Trucking Accessories



Tire Chain Carrier

Tire Chain Carrier



Heavy duty steel mounting plate and frame designed to carry the heavy snow tire chains.
Heavy duty steel mounting bars to hang chains.
All welded construction.
Lockable 3/16" diamond plate aluminum hinged lid cover to secure the chains.
Mounts to side of truck frame for easy access to snow tire chains during threatening weather conditions.
Bolts to Frame with Four Bolts.
Bolt pattern spaced to accommodate crossmembers on truck frame.

PART NO. 569-05004-00 Bolt on Tire Chain Carrier

Reflective Tape

Reflective tape sold in two different widths. 3/8" wide used on tool box door extrusions. 1" wide used on cab protectors.
Reflective tape enhances the esthetics and nighttime visibility. Weather-Resistant and Superior Adhesion for Extended Service Life. Choices of Weather resistant and superior adhesion for extended service life.
Choice of eight different colors available to match your truck color scheme.
Black is the standard color on stock accessories.
Both 3/8"w and 1"w rolls are 150 feet in length.

1" wide		3/8" wide	
Black	Part No. 567-05101-00	Black	Part No. 567-05108-00
Blue	Part No. 567-05201-00	Blue	Part No. 567-05208-00
Gold	Part No. 567-05401-00	Gold	Part No. 567-05408-00
Green	Part No. 567-05501-00	Green	Part No. 567-05508-00
Orange	Part No. 567-05601-00	Orange	Part No. 567-05608-00
Red	Part No. 567-05701-00	Red	Part No. 567-05708-00
Silver	Part No. 567-05801-00	Silver	Part No. 567-05808-00
Yellow	Part No. 567-05901-00	Yellow	Part No. 567-05908-00

Conspicuity Tape

Meets DOT requirements - Impact Resistant - Solvent Resistant - 2" Wide x 150 Feet Per Roll

Part No. 567-05022-01 2" X 150' Red/White DOT Reflective Tape

Heavy Duty Trucking Accessories



Hydraulic Reservoir Tank Kits

Hydraulic Reservoir Tank Kits

Hydraulic tanks hold hydraulic oil required for operating wet systems. Rugged steel or aluminum tanks available in 35 to 75 gallon capacity. Tanks available in an upright, square, or round design. **Part numbers include mounting kit.**



506-25070-03



506-25950-03



506-25036-03

Part No.	506-25035-03	35-gallon aluminum round	24" Diameter x 19"L
Part No.	506-25036-03	35-gallon steel round	24" Diameter x 19"L
Part No.	506-25050-03	50-gallon aluminum upright	34" L x 13" W x 26" H
Part No.	506-25070-03	70-gallon aluminum upright	46.5"L x 13"W x 26"H
Part No.	506-25150-03	50-gallon steel upright	34"L x 13"W x 26"H
Part No.	506-25170-03	70-gallon steel upright	46.5"L x 13"W x 26"H
Part No.	506-25950-03	50-gallon aluminum round	24" Diameter x 27" L
Part No.	506-25970-03	75-gallon aluminum round	24" Diameter x 39" L

Hydraulic Hoses

1" High Pressure

Part No.	504-05018-16	1" High Pressure 18"
Part No.	504-05024-16	1" High Pressure 24"
Part No.	504-05030-16	1" High Pressure 30"
Part No.	504-05036-16	1" High Pressure 36"
Part No.	504-05148-16	1" High Pressure 48"
Part No.	504-05160-16	1" High Pressure 60"
Part No.	504-05173-16	1" High Pressure 73"
Part No.	504-05190-16	1" High Pressure 90"
Part No.	504-05118-16	1" High Pressure 108"

1 1/4" Low Pressure

Part No.	504-05018-20	1 1/4" Low Pressure 18"
Part No.	504-05024-20	1 1/4" Low Pressure 24"
Part No.	504-05030-20	1 1/4" Low Pressure 30"
Part No.	504-05036-20	1 1/4" Low Pressure 36"
Part No.	504-05048-20	1 1/4" Low Pressure 48"
Part No.	504-05060-20	1 1/4" Low Pressure 60"
Part No.	504-05073-20	1 1/4" Low Pressure 73"
Part No.	504-05090-20	1 1/4" Low Pressure 90"
Part No.	504-05108-20	1 1/4" Low Pressure 108"

Hydraulic Hoses are pre-crimped with NPT(1"HP / 1 1/4"LP) ends. Hoses meet DOT Standards for Pressure Ratings.

Heavy Duty Trucking Accessories



Hydraulic Wet-Line Kits

ONLY EAST PACKS A COMPLETE WET-LINE SYSTEM IN ONE EASY KIT.

We'll pack a kit tailor made for your truck.

There's only one easy way to order a complete wet-line system.

East makes it easy by providing all the components you need and exactly the components you need.

A single phone call to East is all it takes. We'll deliver a kit with the following components matched to the specifications of your drivetrain, chassis and haul consideration

Pump
PTO
Hoses*
In-cab controls
Reservoir Tank
Required fittings



*SIZES MAY VARY WITH TRUCK APPLICATIONS.

Here's all it takes to spec an East wet-line kit.

East makes it easy. You can depend on us for all the technical assistance and hydraulic system knowledge necessary to accurately spec a complete wet-line system.

These four easy steps are all it takes:

- 1 Gather all the essential information, model & make of your transmission, location of you reservoir and trailer information.
- 2 Call East. One of our Customer Service specialists will process your information immediately.
- 3 We'll call you back with complete specifications and cost of your wet-line kit.
- 4 You'll receive your East wet-line kit within days of placing your order.

**To make sure you have all the right numbers, just remember this one —
we'll take care of the rest: **1-800-362-0851****

**Or refer to the Wet-Line Kit Catalog located on our website -
www.eastmfg.com**

Heavy Duty Trucking Accessories



Warranty

EAST Manufacturing Corporation warrants each new standard heavy-duty trucking accessory to be free of defects in material and workmanship for one (1) full year from date of purchase, provided that the part in question is installed per EAST approved standards and used/operated in accordance with generally approved practices. Any part found to be defective within the warranty period shall be repaired or replaced (at East's sole option) at East's factory or authorized service center provided, however, the purchaser notifies EAST or an authorized distributor as soon as any defect becomes apparent.

The purchaser agrees to return the defective part to EAST'S factory location or authorized service facility, freight prepaid, within 15 days after the defective condition is discovered. This warranty also excludes the following: normal wear, deterioration, misuse, or accidental damage to the part in question.

This warranty expressly excludes the labor involved in removing and reinstalling the accessory on the customer's equipment. EAST and the purchaser agree that, in consideration of the above expressed warranty, all other warranties other than the title, either expressed or implied, whether arising under law or equity including warranties of merchantability and fitness for a particular purpose are excluded from this contract.

Further, the foregoing warranty is made solely to the first purchase from EAST MANUFACTURING CORPORATION or from an authorized distributor.

The sole liability of EAST and the exclusive remedy of the purchaser arising out of the manufacture, sale or use of the parts involved hereunder, on warranties or otherwise, shall be limited to the cost of repair or replacement of the defective part as herein specified.

**Heavy Duty
Trucking
Accessories**



Notes





East Manufacturing Corporation
1871 State Route 44 * PO Box 277
Randolph, Ohio 44265 USA
Toll Free (800) 362-0851
Fax (330) 325 8235
Website www.eastmfg.com